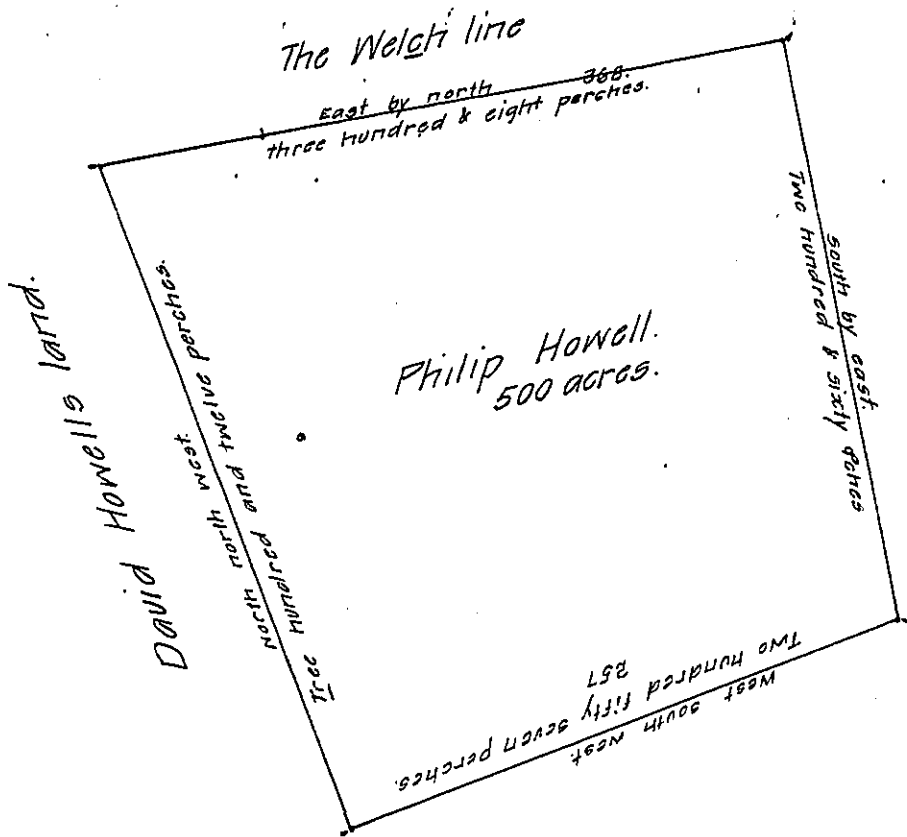
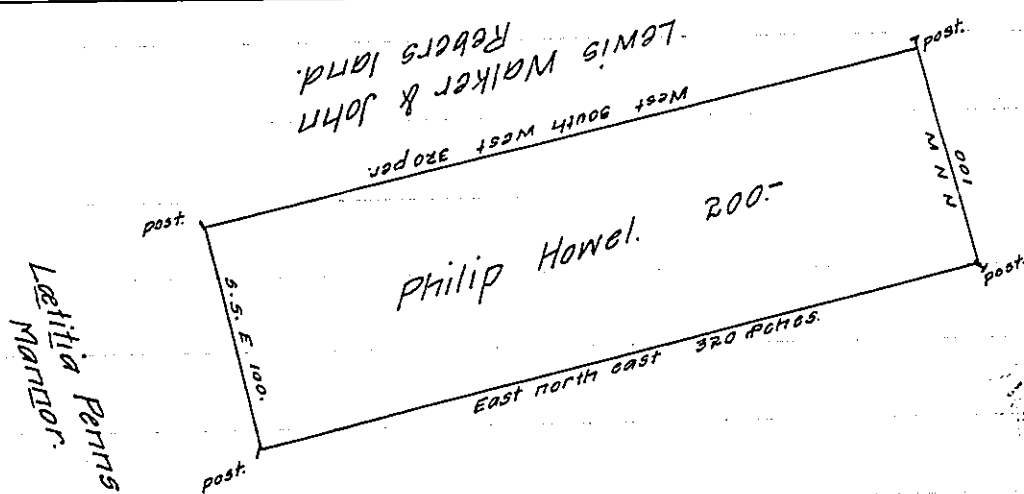


FORM No. 1.



The draught of a tract of land in the Welch tract containing ~~four hundred~~ ^{five hundred acres} ~~and ninety seven acres~~ and one quarter of an acre. Surveyd to Philip Howel the 2^d of the 3^d month 1705 by virtue of a warrt from the Commiss^{rs} of Property bearing date the 9th day of the 9th month 1702.

Drawn in the General Surveyor's office P Jacob Taylor.



The draught of a tract of land Situate in Welch tract Containing two hundred acres surveyd to Philip Howel the 20th of the 3^d month 1704 by virtue of a warr- ant from the Commissioners of Property Dated the 9th of Novem^r 1702.

Drawn in the General Surveyors — P Jacob Taylor.

IN TESTIMONY that the above is a copy of the original remaining on file in the Department of Internal Affairs of Pennsylvania, made conformably to an Act of Assembly approved the 16th day of February, 1833, I have hereunto set my Hand and caused the Seal of said Department to be affixed at Harrisburg, this twelfth day of May 1909.

Nancy Howell
Secretary of Internal Affairs.